



Broadnook
Garden Village
Rothley



Our name has been synonymous with building since 1885, when Charles William Bovis bought a construction company in the London Borough of Marylebone and changed its name to CW Bovis & Co.

From those foundations has grown a Bovis heritage to be proud of, including quality homes and communities across Britain.

Welcome to Broadnook Garden Village

Our prestigious development of brand new homes are located to the south of Rothley in Leicestershire.

Broadnook Garden Village, offers a contemporary collection of 2, 3, 4 and 5 bedroom homes.



A taste of local life

This stunning new development named after the ancient Broadnook Spinney running through the land is positioned near the beautiful areas of Rothley and Quorn, Broadnook Garden Village joins the ranks of the picturesque Charnwood villages and their impeccable transport links.

Getting around

Broadnook is perfectly placed for access to nearby cities and towns, positioned just off the A6 and A46. Bordering the west by the vintage steam trains of Great Central Railway, and the waterways of the Grand Union Canal to the east. Whether by train or Park & Ride, Leicester is less than ten minutes away. Leicester is a key stop on the Midlands Mainline to London, delivering you to the Capital in 75 minutes. East Midlands Airport is a short 20-minute drive up the M1 and just down the road, Loughborough is a culturally diverse, thriving university town with a vast array of eating, leisure and family attractions waiting to be explored.

A place to explore

Broadnook's design and vision is for modern community living, featuring spacious, tree-lined avenues, gorgeous green spaces and a thriving, connected community feel.

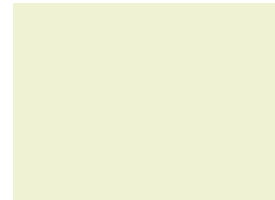
From nurseries, schools and a local care home, to shops, brand new sports facilities and cafes, Broadnook aims to provide everything individuals, growing families, and a thriving community needs, right on the doorstep.

Broadnook will boast leafy, tree-lined avenues, a pristine park, nature-friendly cycling trails and allotments that will keep the community in touch with the nature that surrounds it. On the doorstep of protected nature corridors and The National Forest, creating a community that truly embodies the spirit of a Garden Village is a clear priority.

Broadnook Garden Village is created with exceptional connectivity at its heart, while retaining its place in nature at the cusp of the ancient and beautiful National Forest in Charnwood. Whether escaping to the country, raising a family, or seeking to be part of a thriving community, discover Broadnook and find your ideal place to live

Development layout

Roman Fields boasts a stunning range of two to five bedroom homes each with unique views and aspects. Discover your dream home in Rothley today.



The Oak
5 bedroom homes



The Limewood
5 bedroom homes



The Cedarwood
5 bedroom homes



The Fern
5 bedroom homes



The Redwood
5 bedroom homes



The Maple
4 bedroom homes



The Mayfield
4 bedroom homes



The Aspen
4 bedroom homes



The Rosewood
4 bedroom homes



The Larch
4 bedroom homes



The Rowan
3 bedroom homes



The Spruce
3 bedroom homes



The Turnwood
3 bedroom homes



The Iris
2 bedroom homes



The Hawthorn
2 bedroom homes



The Hawthorn SE
2 bedroom homes

Pre-sold homes

- 1 bedroom homes
- 2 bedroom homes
- 3 bedroom homes



This plan has been produced for home identification purposes only and is not to scale. The development layout, landscaping and tenure of all dwellings may be subject to change throughout the course of the development. Finishes and materials may vary from those shown on the plan. Please check the details of your chosen plot and house type with the sales consultant. Development layout plan correct at time of production.

The Oak

5 bedroom home

Ground floor	metres	feet / inches
Kitchen / family / dining	8.29 x 4.50	27' 2" x 14' 9"
Sitting room	7.20 x 4.06	23' 7" x 13' 4"
Dining room	4.06 x 3.05	13' 4" x 10' 0"
Study	4.50 x 2.39	14' 9" x 7' 10"

First floor	metres	feet / inches
Bedroom 1	4.06 x 3.80	13' 4" x 12' 6"
Bedroom 2	4.37 x 3.40	14' 4" x 11' 2"
Bedroom 3	4.13 x 3.15	13' 6" x 10' 4"
Bedroom 4	3.96 x 3.19	13' 0" x 10' 6"
Bedroom 5	3.23 x 3.23	10' 7" x 10' 7"

ovn	oven	ffzr	fridge freezer
h	hob	cyl	hot water cylinder
dw	dishwasher	cup'd	cupboard
ws	washing machine space	◀ ▶	measuring points

The Oak | R5310 CROTH |

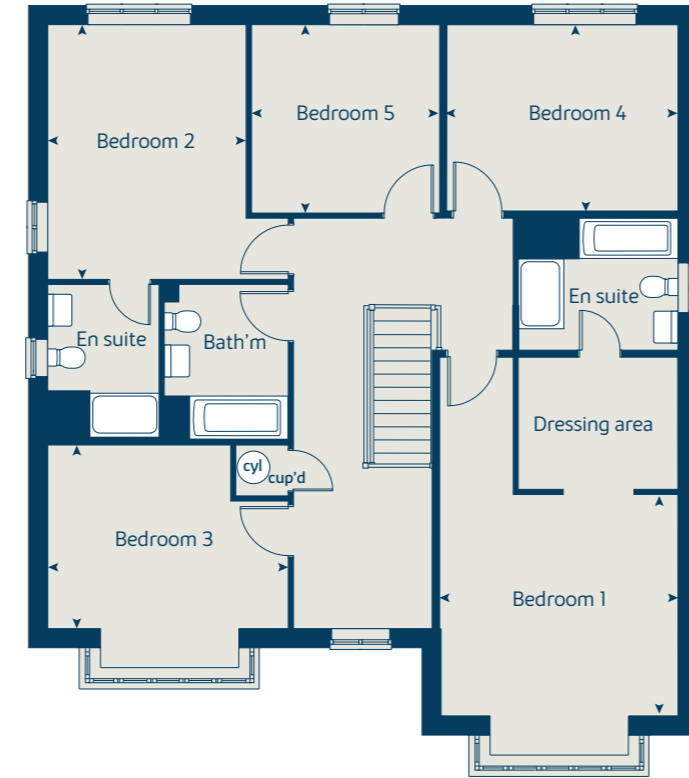
The floorplan has been produced for illustrative purposes only. Room sizes shown are between arrow points as indicated on plan. The dimensions have tolerances of + or -50mm and should not be used other than for general guidance. If specific dimensions are required, enquiries should be made to the sales consultant. The floor plans shown are not to scale. Measurements are based on the original drawings. Slight variations may occur during construction.

The illustrations shown are computer generated impressions of how the property may look and are indicative only. External details or finishes may vary on individual plots and homes may be built in either detached or attached styles depending on the development layout. Exact specifications, window styles and whether a property is left or right handed may differ from plot to plot. Please speak to our sales consultant for specific plot details.

Ground floor



First floor



Floor area: 242 sq.m | 2,608 sq.ft

The Limewood

5 bedroom home

Ground floor	metres	feet / inches
Kitchen / dining / family	10.36 x 3.58	34' 0" x 11' 9"
Dining room	3.81 x 3.05	12' 8" x 10' 0"
Sitting room	5.62 x 3.83	18' 5" x 12' 7"
Study	3.86 x 2.24	12' 8" x 7' 4"

First floor	metres	feet / inches
Bedroom 1	4.81 x 3.83	15' 9" x 12' 9"
Bedroom 2	4.05 x 4.00	13' 3" x 13' 1"
Bedroom 3	3.26 x 3.23	10' 5" x 10' 7"
Bedroom 4	3.54 x 2.82	11' 8" x 9' 3"
Bedroom 5	2.86 x 2.69	9' 5" x 8' 9"

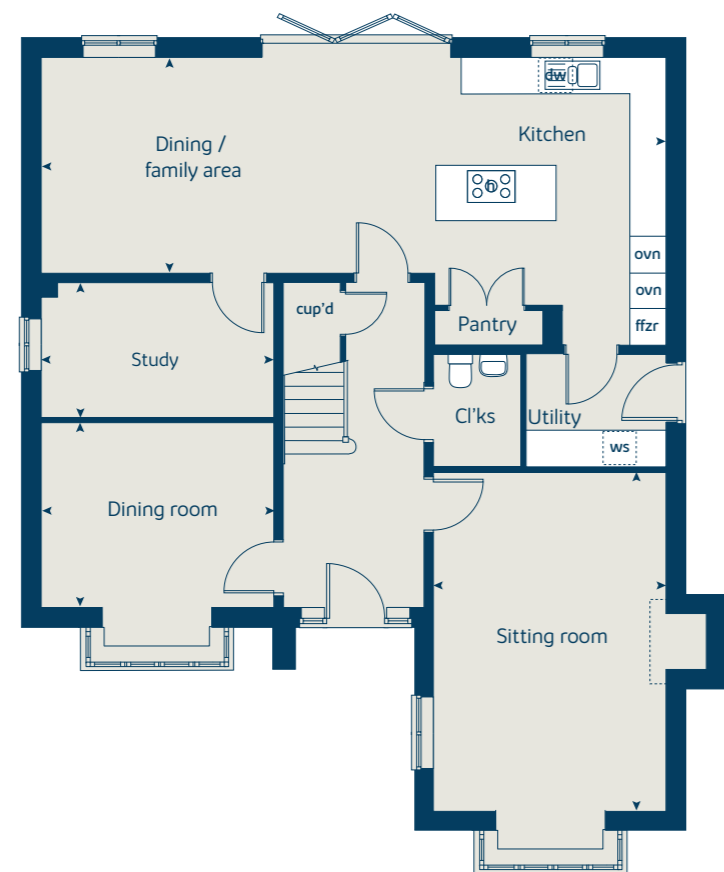
ovn	oven	ffzr	fridge freezer
h	hob	cyl	hot water cylinder
dw	dishwasher	cup'd	cupboard
ws	washing machine space	< >	measuring points

The Limewood | R5200 CROTH |
 The floorplan has been produced for illustrative purposes only. Room sizes shown are between arrow points as indicated on plan. The dimensions have tolerances of + or -50mm and should not be used other than for general guidance. If specific dimensions are required, enquiries should be made to the sales consultant. The floor plans shown are not to scale. Measurements are based on the original drawings. Slight variations may occur during construction.

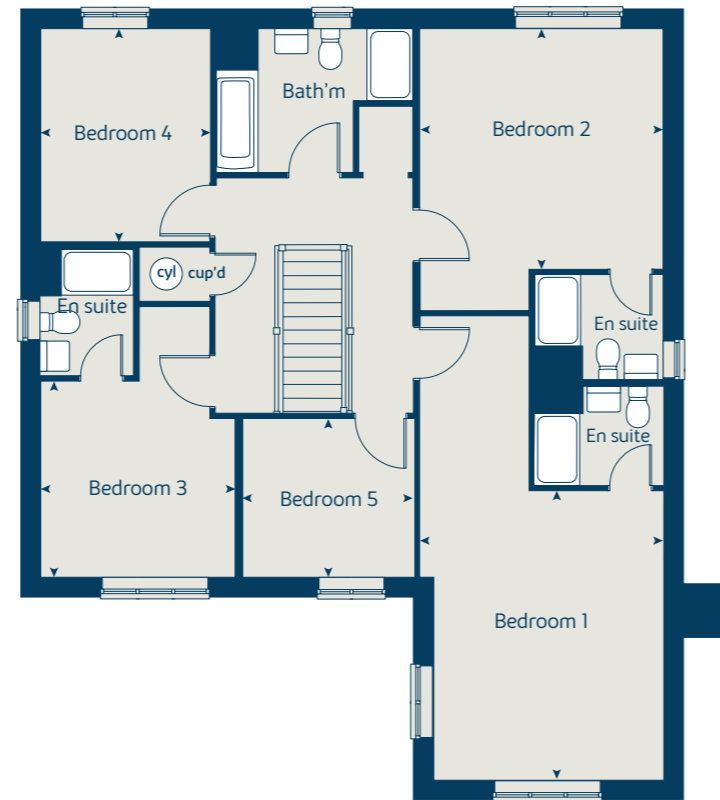
The illustrations shown are computer generated impressions of how the property may look and are indicative only. External details or finishes may vary on individual plots and homes may be built in either detached or attached styles depending on the development layout. Exact specifications, window styles and whether a property is left or right handed may differ from plot to plot. Please speak to our sales consultant for specific plot details.

* Window omitted to selected plots only. Please see sales consultant for further details.

Ground floor



First floor



Floor area: 217 sq.m | 2,339 sq.ft



The Cedarwood

5 bedroom home

Ground floor	metres	feet / inches
Kitchen	3.78 x 3.46	12' 5" x 11' 4"
Family area	4.33 x 3.80	14' 3" x 12' 5"
Dining area	5.25 x 3.58	17' 3" x 11' 9"
Sitting room	5.44 x 3.46	17' 10" x 11' 4"
Study	3.80 x 1.77	12' 5" x 5' 10"

First floor	metres	feet / inches
Bedroom 1	5.47 x 4.68	17' 11" x 15' 4"
Bedroom 2	4.93 x 3.34	16' 2" x 10' 11"
Bedroom 3	4.48 x 3.44	14' 8" x 11' 4"
Bedroom 4	4.66 x 3.46	15' 4" x 11' 4"
Bedroom 5	2.92 x 2.57	9' 7" x 8' 5"

ovn	oven	ffzr	fridge freezer
h	hob	cyl	hot water cylinder
dw	dishwasher	cup'd	cupboard
ws	washing machine space	<>	measuring points

The Cedarwood | R506 02 CROTH |
 The floorplan has been produced for illustrative purposes only. Room sizes shown are between arrow points as indicated on plan. The dimensions have tolerances of + or -50mm and should not be used other than for general guidance. If specific dimensions are required, enquiries should be made to the sales consultant. The floor plans shown are not to scale. Measurements are based on the original drawings. Slight variations may occur during construction.
 The illustrations shown are computer generated impressions of how the property may look and are indicative only. External details or finishes may vary on individual plots and homes may be built in either detached or attached styles depending on the development layout. Exact specifications, window styles and whether a property is left or right handed may differ from plot to plot. Please speak to our sales consultant for specific plot details.

Ground floor



First floor



Floor area: 215 sq.m | 2,316 sq.ft



The Fern

5 bedroom home

Ground floor	metres	feet / inches
Kitchen	3.60 x 3.03	11' 10" x 9' 11"
Family / dining area	4.97 x 3.60	16' 3" x 11' 10"
Sitting room	5.80 x 3.80	19' 0" x 12' 5"
Study	2.53 x 2.11	8' 4" x 6' 11"

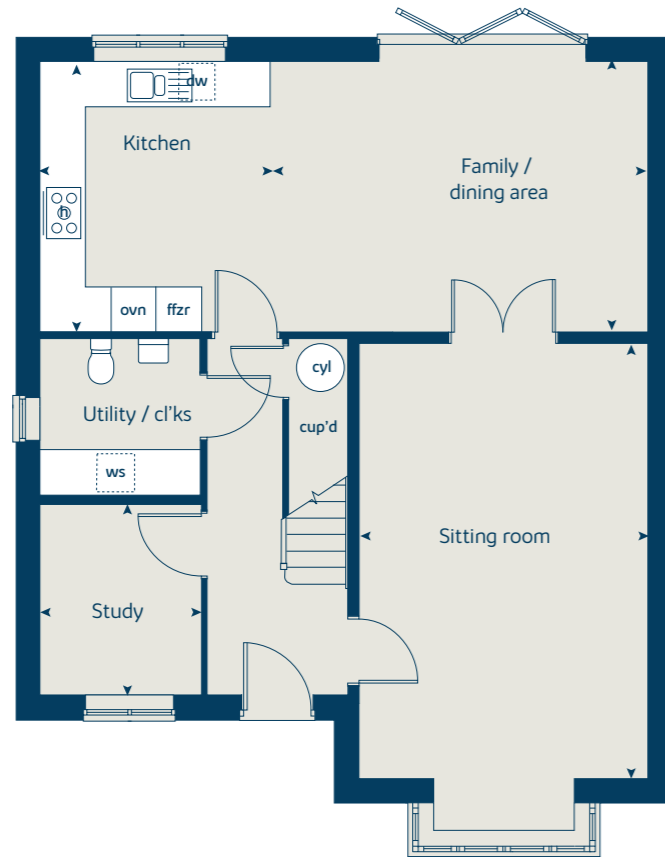
First floor	metres	feet / inches
Bedroom 1	3.80 x 3.62	12' 5" x 11' 11"
Bedroom 2	4.11 x 3.07	13' 6" x 10' 1"
Bedroom 3	3.62 x 2.26	11' 11" x 8' 8"
Bedroom 4	3.05 x 2.99	10' 0" x 9' 9"
Bedroom 5	3.05 x 2.16	10' 0" x 7' 1"

ovn	oven	ffzr	fridge freezer
h	hob	cup'd	cupboard
dw	dishwasher	cyl	hot water cylinder
ws	washing machine space	<>	measuring points

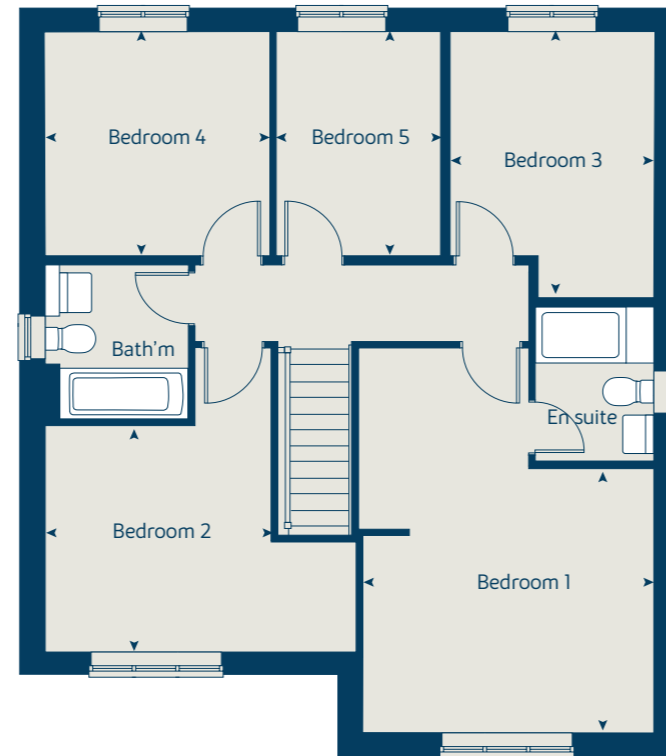
The Fern | WM508 CROTH |
 The floorplan has been produced for illustrative purposes only. Room sizes shown are between arrow points as indicated on plan. The dimensions have tolerances of + or -50mm and should not be used other than for general guidance. If specific dimensions are required, enquiries should be made to the sales consultant. The floor plans shown are not to scale. Measurements are based on the original drawings. Slight variations may occur during construction.

The illustrations shown are computer generated impressions of how the property may look and are indicative only. External details or finishes may vary on individual plots and homes may be built in either detached or attached styles depending on the development layout. Exact specifications, window styles and whether a property is left or right-handed may differ from plot to plot. Please speak to our sales consultant for specific plot details.

Ground floor



First floor



Floor area: 144 sq.m | 1,550 sq.ft



The Redwood

5 bedroom home

Ground floor	metres	feet / inches
Kitchen	3.91 x 3.43	12' 10" x 11' 3"
Dining / family area	5.35 x 3.24	17' 7" x 10' 8"
Sitting room	5.55 x 3.39	18' 3" x 11' 1"

First floor	metres	feet / inches
Bedroom 1	6.52 x 3.39	21' 4" x 11' 1"
Bedroom 2	5.31 x 2.91	17' 5" x 9' 11"
Bedroom 3	3.28 x 3.17	10' 9" x 10' 5"
Bedroom 4	3.03 x 2.94	9' 11" x 9' 8"
Bedroom 5	2.94 x 2.27	9' 8" x 7' 5"

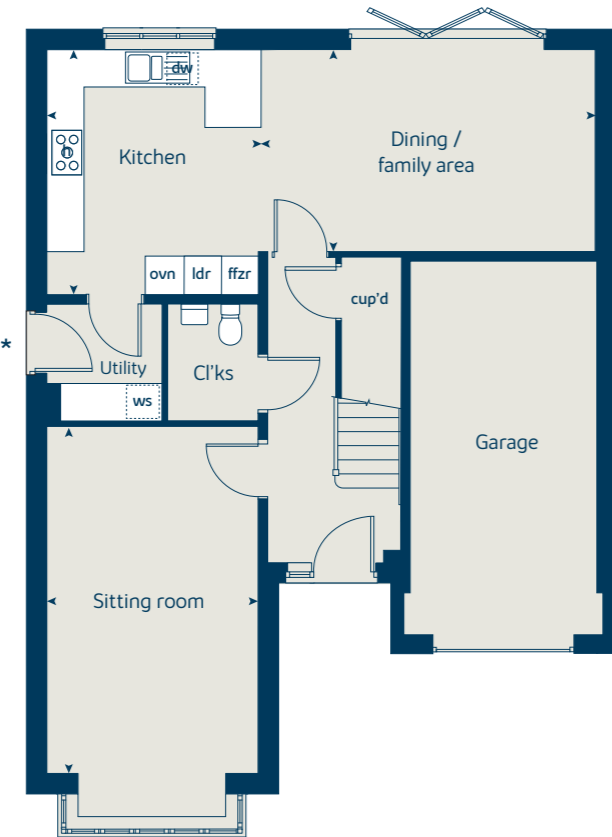
ovn	oven	ffzr	fridge freezer
h	hob	cyl	hot water cylinder
dw	dishwasher	cup'd	cupboard
ws	washing machine space	< >	measuring points

The Redwood | X5415 CROTH |
 The floorplan has been produced for illustrative purposes only. Room sizes shown are between arrow points as indicated on plan. The dimensions have tolerances of + or -50mm and should not be used other than for general guidance. If specific dimensions are required, enquiries should be made to the sales consultant. The floor plans shown are not to scale. Measurements are based on the original drawings. Slight variations may occur during construction.

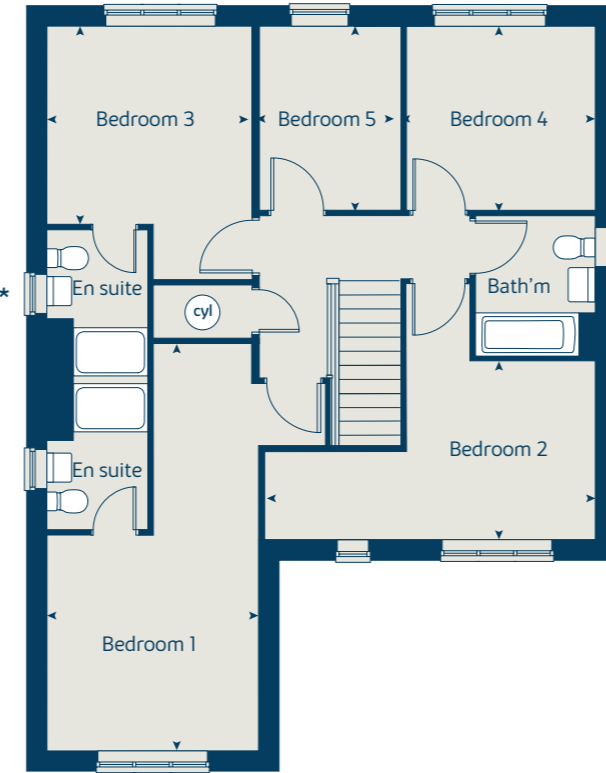
The illustrations shown are computer generated impressions of how the property may look and are indicative only. External details or finishes may vary on individual plots and homes may be built in either detached or attached styles depending on the development layout. Exact specifications, window styles and whether a property is left or right handed may differ from plot to plot. Please speak to our sales consultant for specific plot details.

* Window and door apply to selected plots only. Please see sales consultant for further details.

Ground floor



First floor



Floor area: 153 sq.m | 1,651 sq.ft



The Maple

4 bedroom home

Ground floor	metres	feet / inches
Kitchen	3.74 x 3.50	12' 3" x 11' 6"
Family / dining area	7.28 x 3.08	23' 11" x 10' 1"
Sitting room	4.50 x 3.50	14' 9" x 11' 6"
Study	2.50 x 2.29	8' 2" x 7' 6"

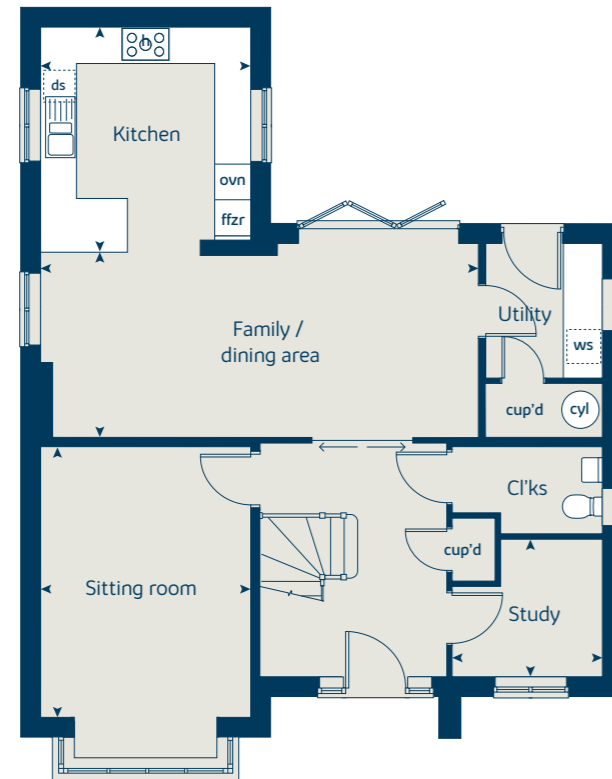
First floor	metres	feet / inches
Bedroom 1	3.60 x 3.50	11' 10" x 11' 6"
Bedroom 2	3.69 x 3.57	12' 1" x 11' 6"
Bedroom 3	4.17 x 2.90	13' 8" x 9' 5"
Bedroom 4	2.95 x 2.89	9' 8" x 9' 5"

ovn	oven	ffzr	fridge freezer
h	hob	cyl	hot water cylinder
ds	dishwasher space	cup'd	cupboard
ws	washing machine space	◄ ►	measuring points

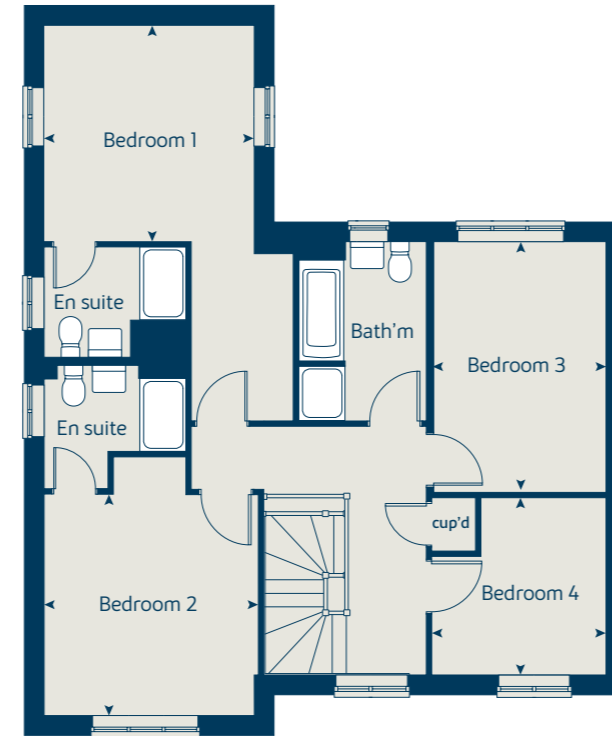
The Maple | X416 02 CROTH |
 The floorplan has been produced for illustrative purposes only. Room sizes shown are between arrow points as indicated on plan. The dimensions have tolerances of + or -50mm and should not be used other than for general guidance. If specific dimensions are required, enquiries should be made to the sales consultant. The floor plans shown are not to scale. Measurements are based on the original drawings. Slight variations may occur during construction.

The illustrations shown are computer generated impressions of how the property may look and are indicative only. External details or finishes may vary on individual plots and homes may be built in either detached or attached styles depending on the development layout. Exact specifications, window styles and whether a property is left or right handed may differ from plot to plot. Please speak to our sales consultant for specific plot details.

Ground floor



First floor



Floor area: 165 sq.m | 1,786 sq.ft



The Mayfield

4 bedroom home

Floor area: 113 sq.m | 1,219 sq.ft

Ground floor	metres	feet / inches
Kitchen	3.34 x 3.11	11' 0" x 10' 3"
Dining area	3.13 x 2.70	10' 3" x 8' 10"
Sitting room	5.05 x 3.20	16' 7" x 10' 6"

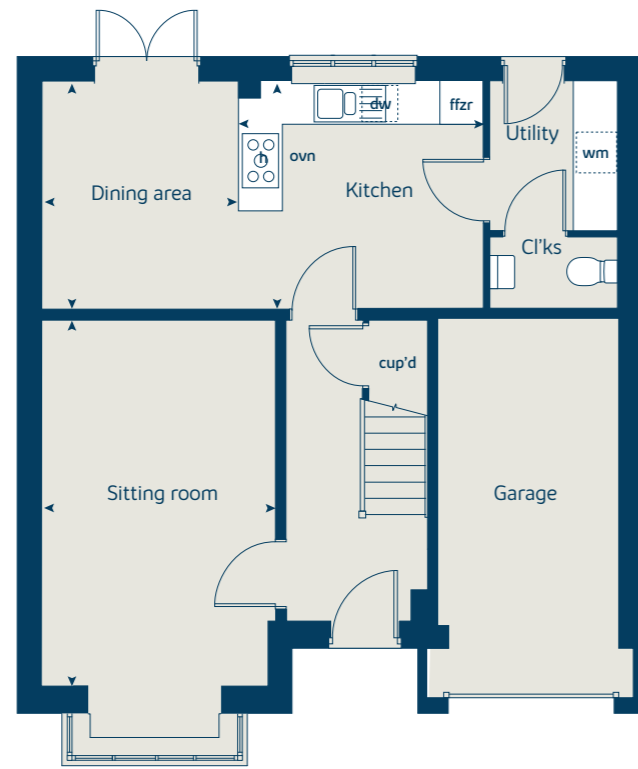
First floor	metres	feet / inches
Bedroom 1	4.39 x 4.21	14' 5" x 13' 10"
Bedroom 2	5.19 x 2.51	17' 0" x 8' 3"
Bedroom 3	3.82 x 2.56	12' 6" x 8' 5"
Bedroom 4	3.01 x 2.15	9' 11" x 7' 1"

ovn	oven	ffzr	fridge freezer
h	hob	cup'd	cupboard
ds	dishwasher space	◀ ▶	measuring points
ws	washing machine space		

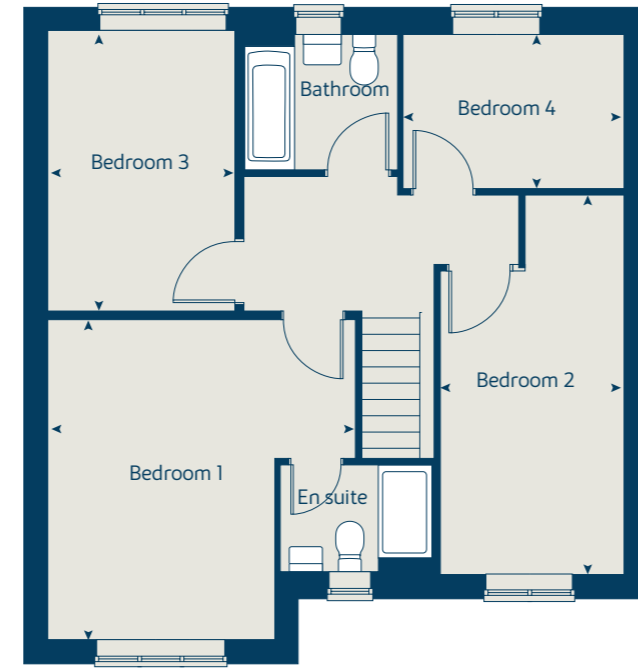
The Mayfield | R4007 CROTH |
 The floorplan has been produced for illustrative purposes only. Room sizes shown are between arrow points as indicated on plan. The dimensions have tolerances of + or -50mm and should not be used other than for general guidance. If specific dimensions are required, enquiries should be made to the sales consultant. The floor plans shown are not to scale. Measurements are based on the original drawings. Slight variations may occur during construction.

The illustrations shown are computer generated impressions of how the property may look and are indicative only. External details or finishes may vary on individual plots and homes may be built in either detached or attached styles depending on the development layout. Exact specifications, window styles and whether a property is left or right-handed may differ from plot to plot. Please speak to our sales consultant for specific plot details.

Ground floor



First floor



The Aspen

4 bedroom home

Ground floor	metres	feet / inches
Kitchen / dining area	7.77 x 3.37	25' 6" x 11' 1"
Sitting room	5.06 x 3.39	16' 7" x 11' 1"
Study	2.02 x 2.01	6' 7" x 6' 7"

First floor	metres	feet / inches
Bedroom 1	4.52 x 3.81	14' 10" x 12' 6"
Bedroom 2	3.87 x 3.11	12' 8" x 10' 2"
Bedroom 3	4.07 x 2.42	13' 4" x 7' 11"
Bedroom 4	3.61 x 2.42	11' 10" x 7' 11"

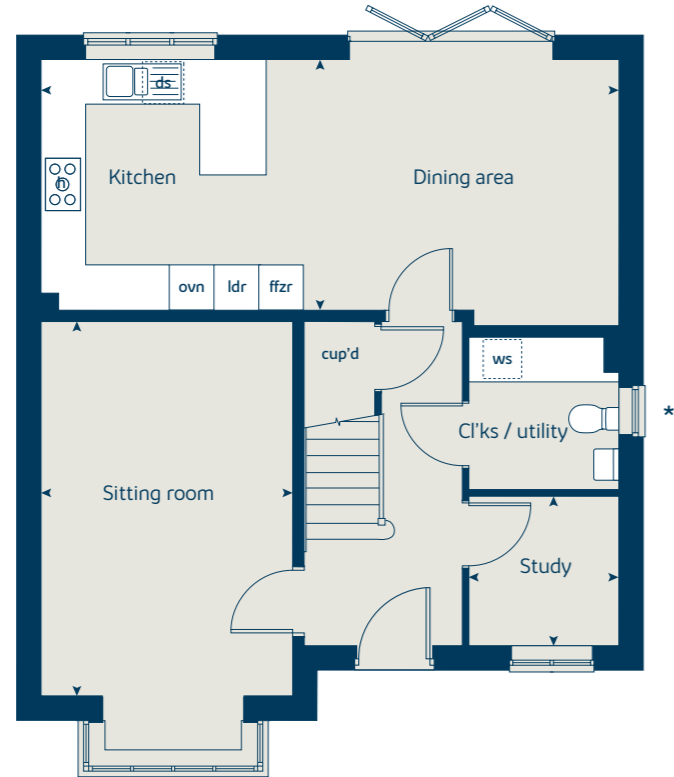
ovn	oven	ffzr	fridge freezer
h	hob	ldr	larder
ds	dishwasher space	cup'd	cupboard
ws	washing machine space	< >	measuring points

The Aspen | X414 (IF) 02 vt CROTH |
 The floorplan has been produced for illustrative purposes only. Room sizes shown are between arrow points as indicated on plan. The dimensions have tolerances of + or -50mm and should not be used other than for general guidance. If specific dimensions are required, enquiries should be made to the sales consultant. The floor plans shown are not to scale. Measurements are based on the original drawings. Slight variations may occur during construction.

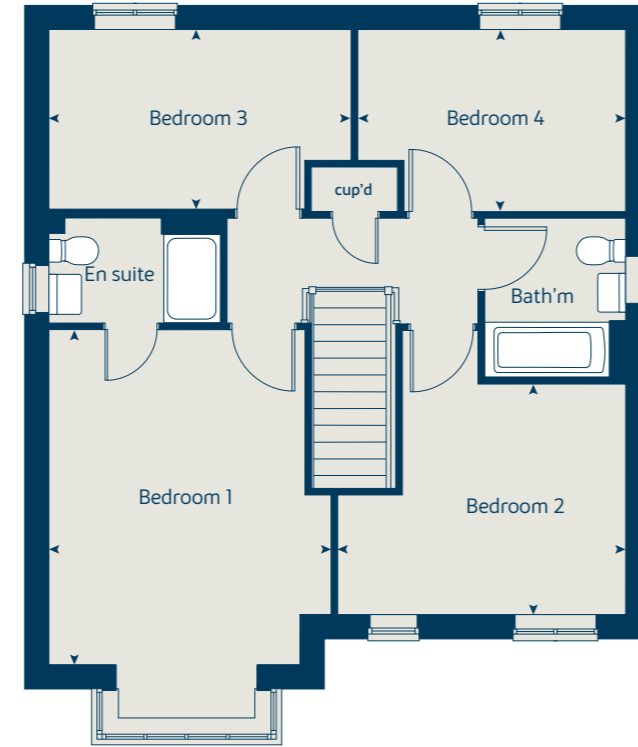
The illustrations shown are computer generated impressions of how the property may look and are indicative only. External details or finishes may vary on individual plots and homes may be built in either detached or attached styles depending on the development layout. Exact specifications, window styles and whether a property is left or right handed may differ from plot to plot. Please speak to our sales consultant for specific plot details.

* Window omitted to selected plots only. Please see sales consultant for further details.

Ground floor



First floor



Floor area: 129 sq.m | 1,394 sq.ft



The Rosewood

4 bedroom home

Floor area: 107 sq.m | 1,160 sq.ft

Ground floor	metres	feet / inches
Kitchen / dining area	5.52 x 3.50	18' 1" x 11' 6"
Sitting room	4.40 x 3.27	14' 5" x 10' 9"

First floor	metres	feet / inches
Bedroom 1	3.59 x 3.27	11' 9" x 10' 9"
Bedroom 2	3.27 x 2.62	10' 9" x 8' 7"
Bedroom 3	2.43 x 2.16	8' 0" x 7' 1"
Bedroom 4	2.55 x 2.16	8' 5" x 7' 1"

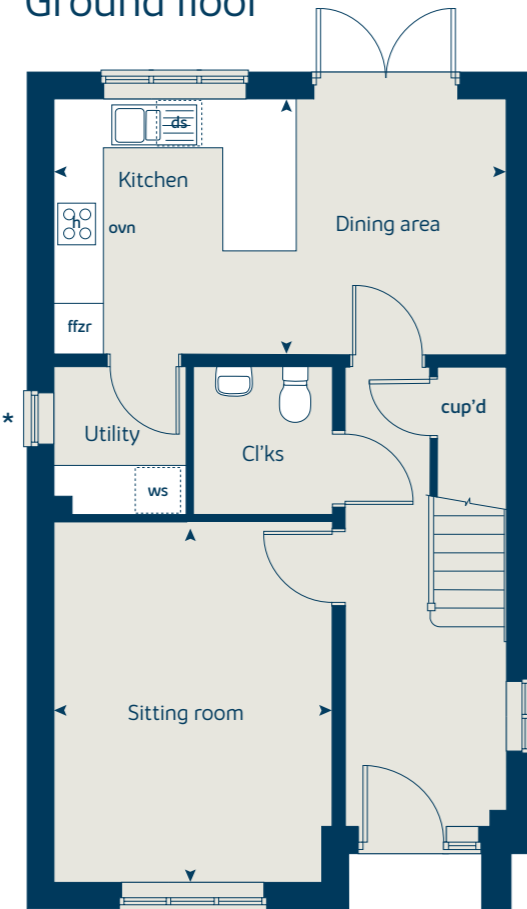
ovn	oven	ffzr	fridge freezer
h	hob	cup'd	cupboard
ds	dishwasher space	< >	measuring points
ws	washing machine space		

The Rosewood | X4308 (IF) 02 vt CROTH |
 The floorplan has been produced for illustrative purposes only. Room sizes shown are between arrow points as indicated on plan. The dimensions have tolerances of + or -50mm and should not be used other than for general guidance. If specific dimensions are required, enquiries should be made to the sales consultant. The floor plans shown are not to scale. Measurements are based on the original drawings. Slight variations may occur during construction.

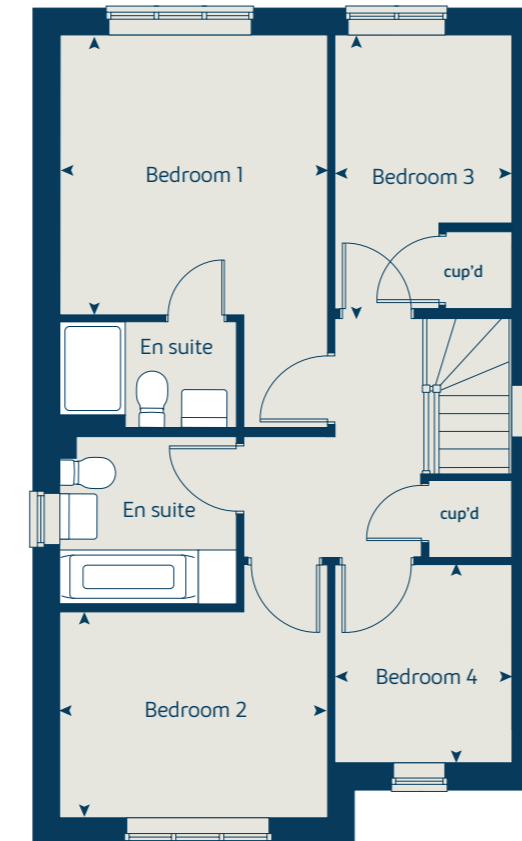
The illustrations shown are computer generated impressions of how the property may look and are indicative only. External details or finishes may vary on individual plots and homes may be built in either detached or attached styles depending on the development layout. Exact specifications, window styles and whether a property is left or right handed may differ from plot to plot. Please speak to our sales consultant for specific plot details.

* Window applies to selected plots only. Please see sales consultant for further details.

Ground floor



First floor



The Larch

4 bedroom home

Ground floor	metres	feet / inches
Kitchen / dining room	5.52 x 3.56	18' 1" x 11' 8"
Sitting room	5.52 x 3.32	18' 1" x 10' 11"

First floor	metres	feet / inches
Bedroom 1	5.52 x 3.56	18' 1" x 11' 8"
Bedroom 2	3.33 x 2.94	10' 11" x 9' 8"
Bedroom 3	3.59 x 3.26	11' 9" x 10' 9"
Bedroom 4	3.62 x 2.17	11' 11" x 7' 1"

ovn	oven	ffzr	fridge freezer
h	hob	cup'd	cupboard
ds	dishwasher space	w	wardrobe
ws	washing machine space	< >	measuring points

The Larch | R4307 CROTH |
 The floorplan has been produced for illustrative purposes only. Room sizes shown are between arrow points as indicated on plan. The dimensions have tolerances of + or -50mm and should not be used other than for general guidance. If specific dimensions are required, enquiries should be made to the sales consultant. The floor plans shown are not to scale. Measurements are based on the original drawings. Slight variations may occur during construction.

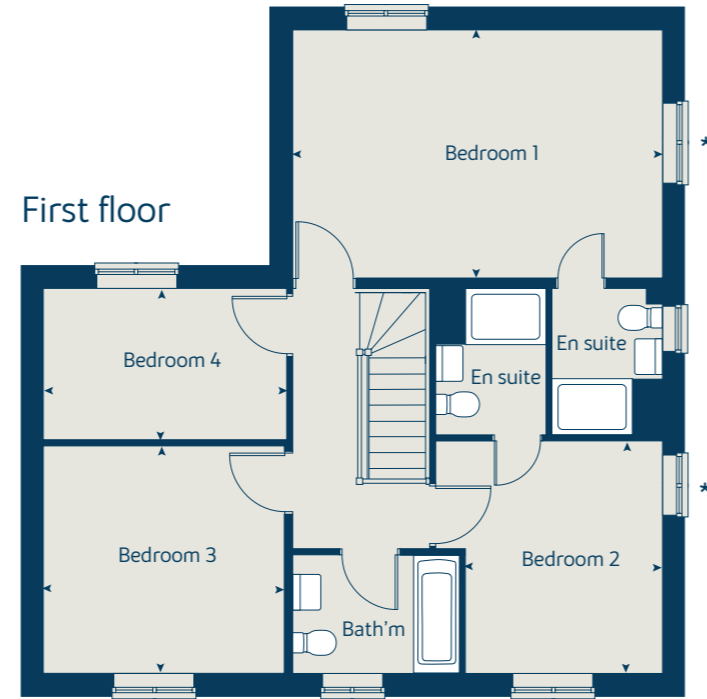
The illustrations shown are computer generated impressions of how the property may look and are indicative only. External details or finishes may vary on individual plots and homes may be built in either detached or attached styles depending on the development layout. Exact specifications, window styles and whether a property is left or right handed may differ from plot to plot. Please speak to our sales consultant for specific plot details.

* Windows apply to selected plots only. Please see sales consultant for further details.

Ground floor



First floor



Floor area: 125 sq.m | 1,335 sq.ft



The Rowan

3 bedroom home

Floor area: 86 sq.m | 931 sq.ft

Ground floor	metres	feet / inches
Kitchen	3.11 x 2.40	10' 2" x 7' 10"
Sitting / dining room	5.23 x 5.19	17' 2" x 17' 0"

First floor	metres	feet / inches
Bedroom 1	3.68 x 3.57	12' 1" x 11' 8"
Bedroom 2	2.97 x 2.44	9' 9" x 8' 0"
Bedroom 3	3.54 x 2.12	11' 7" x 7' 0"

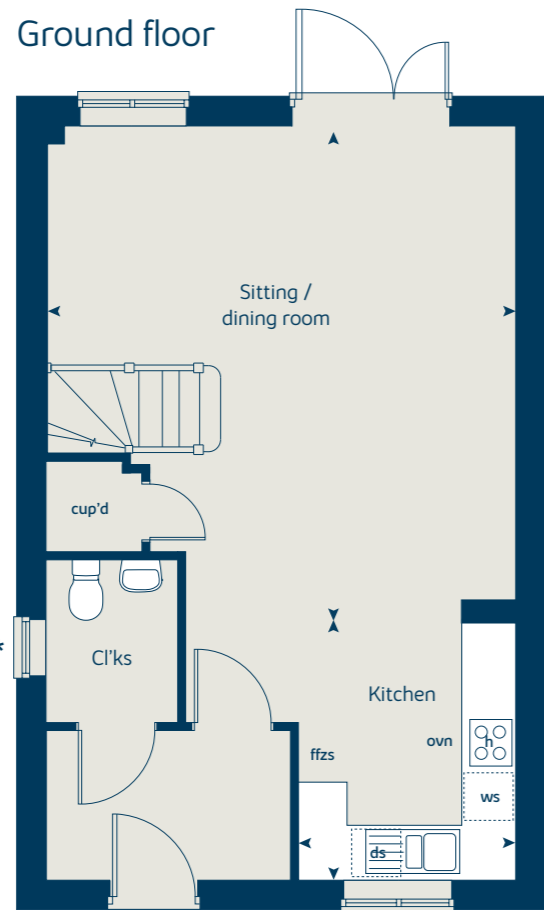
ovn	oven	ffzs	fridge freezer space
h	hob	cup'd	cupboard
ds	dishwasher space	<>	measuring points
ws	washing machine space		

The Rowan | X306 02 CROTH |
 The floorplan has been produced for illustrative purposes only. Room sizes shown are between arrow points as indicated on plan. The dimensions have tolerances of + or -50mm and should not be used other than for general guidance. If specific dimensions are required, enquiries should be made to the sales consultant. The floor plans shown are not to scale. Measurements are based on the original drawings. Slight variations may occur during construction.

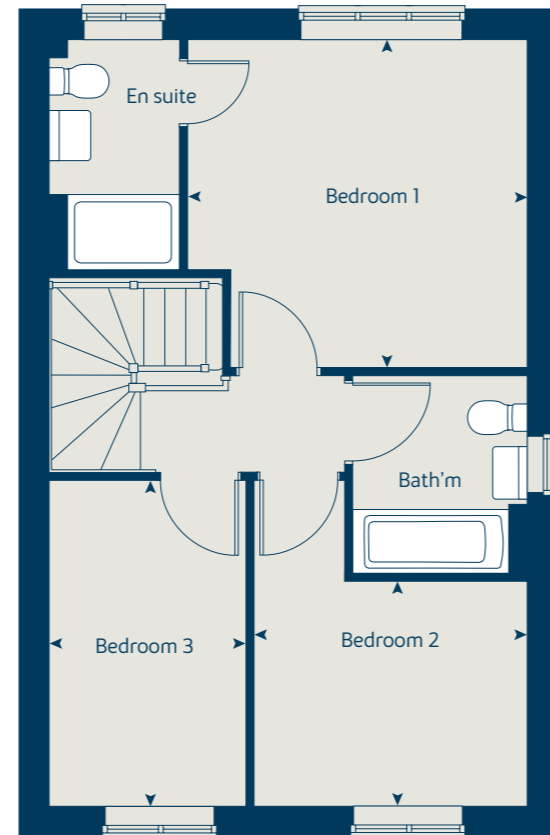
The illustrations shown are computer generated impressions of how the property may look and are indicative only. External details or finishes may vary on individual plots and homes may be built in either detached or attached styles depending on the development layout. Exact specifications, window styles and whether a property is left or right handed may differ from plot to plot. Please speak to our sales consultant for specific plot details.

* Window applies to selected plots only. Please see sales consultant for further details.

Ground floor



First floor



The Spruce

3 bedroom home

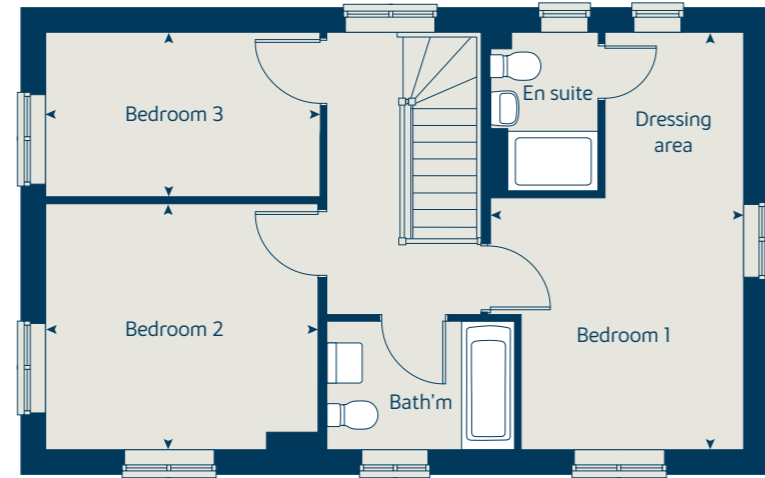
Ground floor	metres	feet / inches
Kitchen	3.16 x 2.69	10' 4" x 8' 10"
Dining area	3.14 x 2.37	10' 4" x 7' 9"
Sitting room	5.52 x 3.32	18' 1" x 10' 11"

First floor	metres	feet / inches
Bedroom 1	5.53 x 2.94	18' 2" x 9' 8"
Bedroom 2	3.59 x 3.26	11' 10" x 10' 9"
Bedroom 3	3.63 x 2.18	11' 11" x 7' 2"

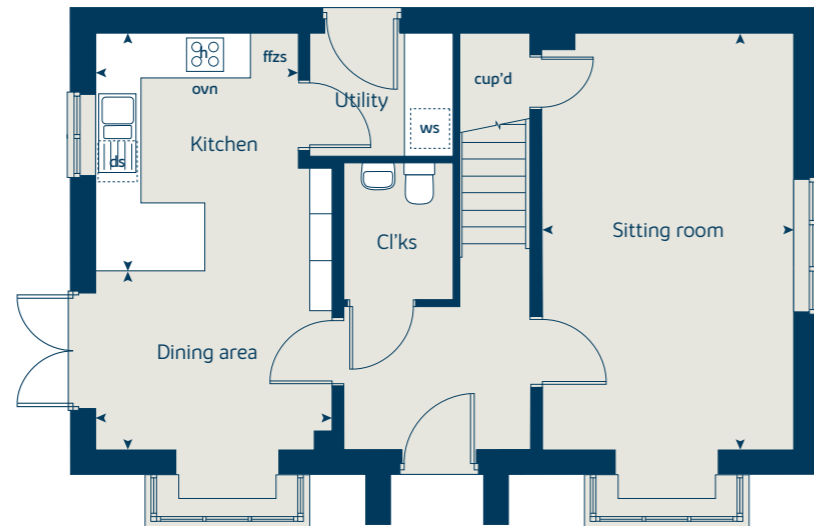
ovn	oven	ws	washing machine space
h	hob	ffzs	fridge freezer space
ds	dishwasher space	< >	measuring points

The Spruce | X307 (IF) 02 vt CROTH |
 The floorplan has been produced for illustrative purposes only. Room sizes shown are between arrow points as indicated on plan. The dimensions have tolerances of + or -50mm and should not be used other than for general guidance. If specific dimensions are required, enquiries should be made to the sales consultant. The floor plans shown are not to scale. Measurements are based on the original drawings. Slight variations may occur during construction.
 The illustrations shown are computer generated impressions of how the property may look and are indicative only. External details or finishes may vary on individual plots and homes may be built in either detached or attached styles depending on the development layout. Exact specifications, window styles and whether a property is left or right handed may differ from plot to plot. Please speak to our sales consultant for specific plot details.

First floor



Ground floor



Floor area: 104 sq.m | 1,119 sq.ft



The Turnwood

3 bedroom home

Floor area: 81 sq.m | 880 sq.ft

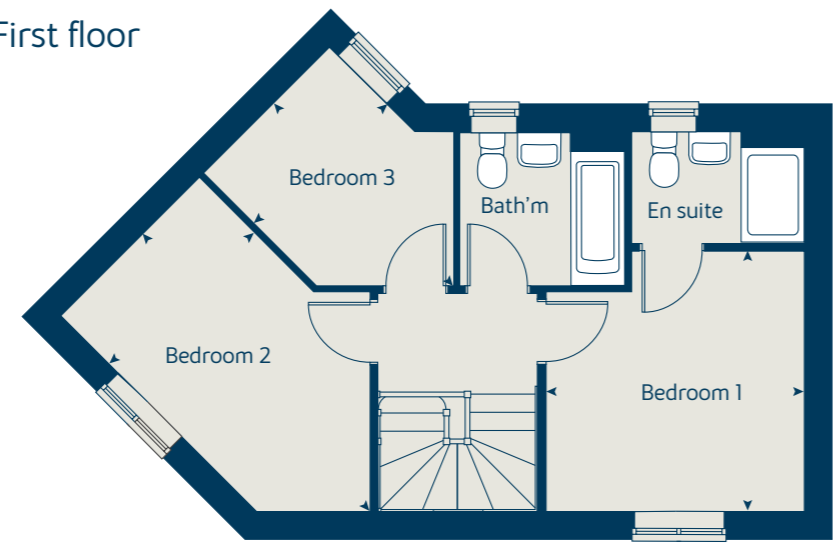
Ground floor	metres	feet / inches
Kitchen	2.54 x 2.50	8' 4" x 8' 2"
Dining area	3.18 x 2.29	10' 5" x 7' 6"
Sitting room	4.80 x 3.22	15' 9" x 10' 7"

First floor	metres	feet / inches
Bedroom 1	3.31 x 3.25	10' 10" x 10' 8"
Bedroom 2	4.50 x 2.46	14' 9" x 8' 1"
Bedroom 3	3.19 x 2.25	10' 5" x 7' 5"

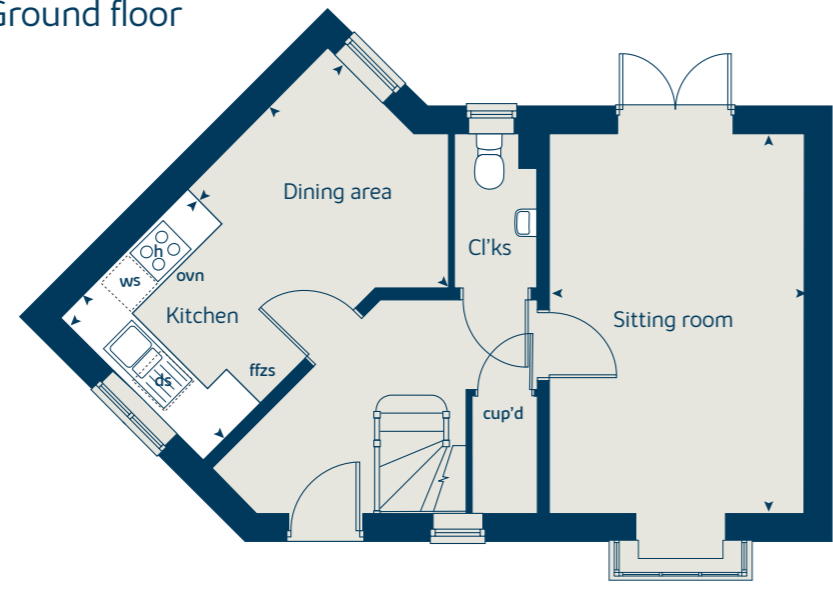
ovn	oven	ffzs	fridge freezer space
h	hob	cup'd	cupboard
ds	dishwasher space	◀ ▶	measuring points
ws	washing machine space		

The Turnwood | CROTH |
 The floorplan has been produced for illustrative purposes only. Room sizes shown are between arrow points as indicated on plan. The dimensions have tolerances of + or -50mm and should not be used other than for general guidance. If specific dimensions are required, enquiries should be made to the sales consultant. The floor plans shown are not to scale. Measurements are based on the original drawings. Slight variations may occur during construction.
 The illustrations shown are computer generated impressions of how the property may look and are indicative only. External details or finishes may vary on individual plots and homes may be built in either detached or attached styles depending on the development layout. Exact specifications, window styles and whether a property is left or right-handed may differ from plot to plot. Please speak to our sales consultant for specific plot details.

First floor



Ground floor

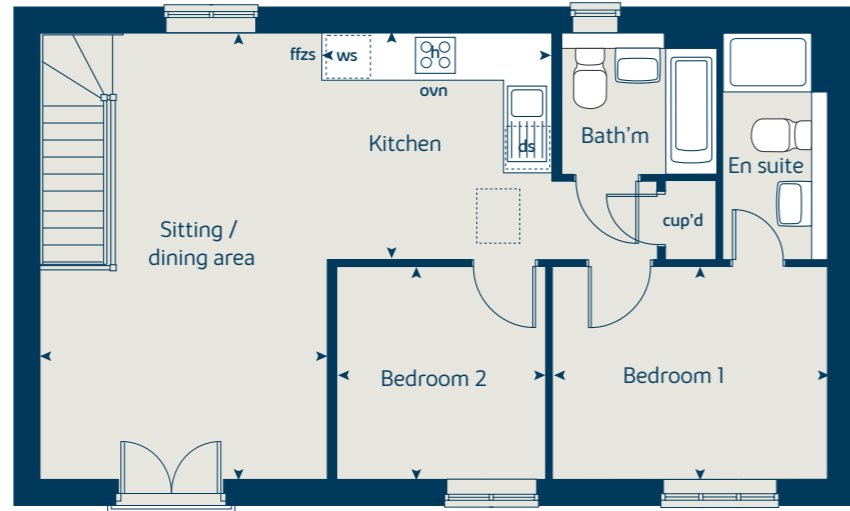


The Iris

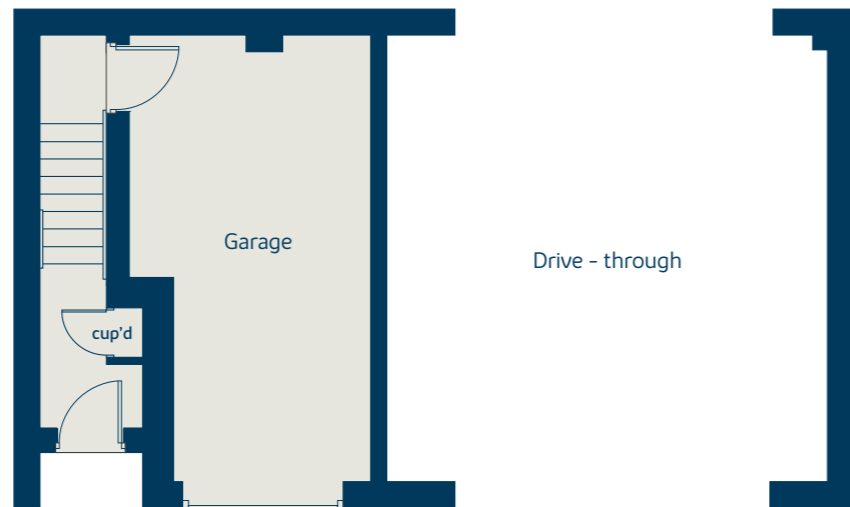
2 bedroom
coach house

Floor area: 69 sq.m | 751 sq.ft

First floor



Ground floor



First floor	metres	feet / inches
Kitchen	3.65 x 3.06	12' 0" x 10' 1"
Sitting / dining area	6.04 x 3.85	19' 10" x 12' 8"
Bedroom 1	3.73 x 2.88	12' 3" x 9' 5"
Bedroom 2	2.88 x 2.84	9' 5" x 9' 4"

ovn	oven	ffzs	fridge freezer space
h	hob	cup'd	cupboard
ds	dishwasher space	◀ ▶	measuring points
ws	washing machine space		

The Iris | Ashbee vt CROTH |
The floorplan has been produced for illustrative purposes only. Room sizes shown are between arrow points as indicated on plan. The dimensions have tolerances of + or -50mm and should not be used other than for general guidance. If specific dimensions are required, enquiries should be made to the sales consultant. The floor plans shown are not to scale. Measurements are based on the original drawings. Slight variations may occur during construction.

The illustrations shown are computer generated impressions of how the property may look and are indicative only. External details or finishes may vary on individual plots and homes may be built in either detached or attached styles depending on the development layout. Exact specifications, window styles and whether a property is left or right-handed may differ from plot to plot. Please speak to our sales consultant for specific plot details.



The Hawthorn

2 bedroom home

Floor area: 63 sq.m | 680 sq.ft

Ground floor	metres	feet / inches
Kitchen	3.78 x 2.86	12' 5" x 9' 5"
Sitting / dining area	4.06 x 3.99	13' 4" x 13' 1"

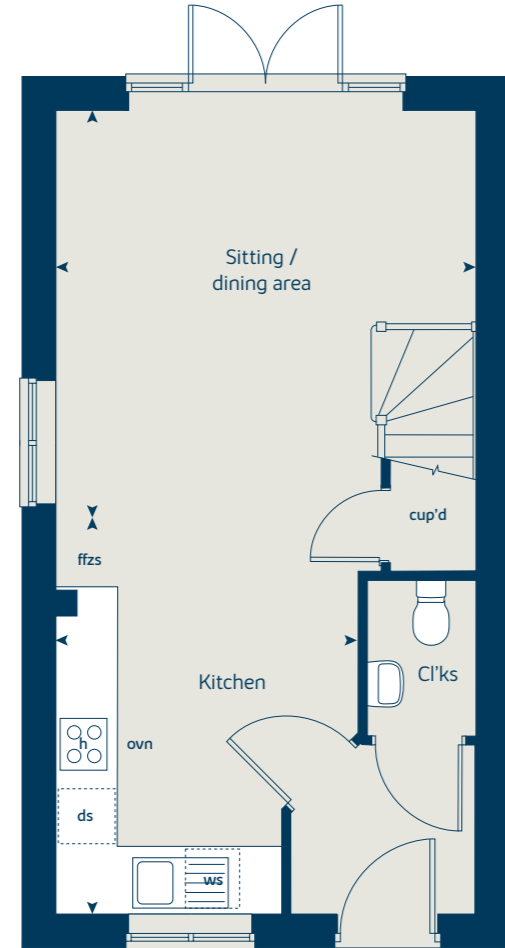
First floor	metres	feet / inches
Bedroom 1	4.06 x 2.68	13' 4" x 8' 10"
Bedroom 2	4.06 x 2.81	13' 4" x 9' 3"

ovn	oven	ffzs	fridge freezer space
h	hob	cup'd	cupboard
ds	dishwasher space	◀ ▶	measuring points
ws	washing machine space		

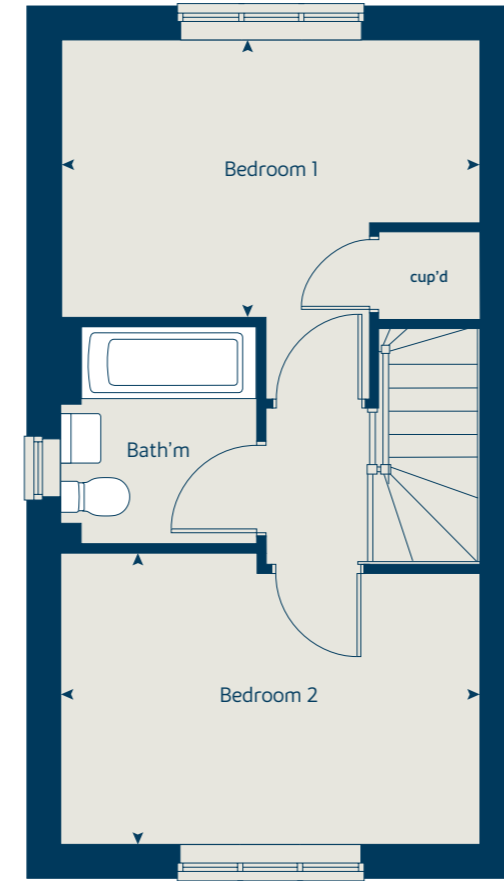
The Hawthorn | X203 02 CROTH |
 The floorplan has been produced for illustrative purposes only. Room sizes shown are between arrow points as indicated on plan. The dimensions have tolerances of + or -50mm and should not be used other than for general guidance. If specific dimensions are required, enquiries should be made to the sales consultant. The floor plans shown are not to scale. Measurements are based on the original drawings. Slight variations may occur during construction.

The illustrations shown are computer generated impressions of how the property may look and are indicative only. External details or finishes may vary on individual plots and homes may be built in either detached or attached styles depending on the development layout. Exact specifications, window styles and whether a property is left or right-handed may differ from plot to plot. Please speak to our sales consultant for specific plot details.

Ground floor



First floor



The Hawthorn SE

2 bedroom home

Floor area: 66 sq.m | 720 sq.ft

Ground floor	metres	feet / inches
Kitchen	4.23 x 2.86	13' 10" x 9' 5"
Sitting / dining area	4.06 x 3.99	13' 4" x 13' 1"

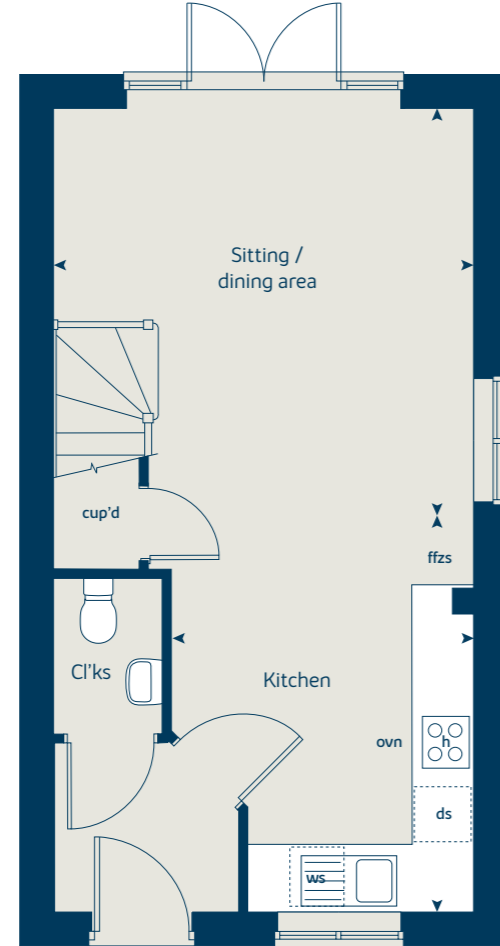
First floor	metres	feet / inches
Bedroom 1	4.06 x 2.68	13' 4" x 8' 10"
Bedroom 2	4.06 x 3.26	13' 4" x 10' 8"

ovn	oven	ffzs	fridge freezer space
h	hob	cup'd	cupboard
ds	dishwasher space	◀ ▶	measuring points
ws	washing machine space		

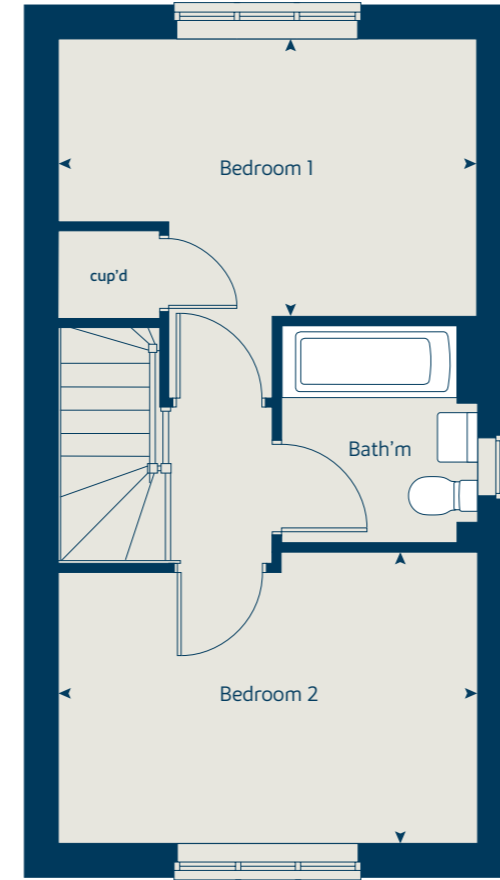
The Hawthorn | X203 02 CROTH |
 The floorplan has been produced for illustrative purposes only. Room sizes shown are between arrow points as indicated on plan. The dimensions have tolerances of + or -50mm and should not be used other than for general guidance. If specific dimensions are required, enquiries should be made to the sales consultant. The floor plans shown are not to scale. Measurements are based on the original drawings. Slight variations may occur during construction.

The illustrations shown are computer generated impressions of how the property may look and are indicative only. External details or finishes may vary on individual plots and homes may be built in either detached or attached styles depending on the development layout. Exact specifications, window styles and whether a property is left or right-handed may differ from plot to plot. Please speak to our sales consultant for specific plot details.

Ground floor



First floor





Enhance and personalise your new home with upgrades and extras from our **Select** range

On top of the unique specification at Broadnook Garden Village, you can also use the Bovis Homes Select brochure to add even more finishing touches to your property and personalise your new home even more.

Customise your kitchen with stylish worktops and the latest modern appliances and personalise your bathrooms with stunning ceramics. Using the Select range there are various options allowing you to create your perfect property which is truly unique to you.

You can personalise every space in your home from kitchen cupboards and electrics to built in wardrobes and if you have a preference for flooring, you can select from our diverse range that includes luxurious carpets, ceramics and vinyl.

The availability of items is subject to the stage of build and can vary by development and housetype. Our sales consultants will be pleased to provide guidance.

Pick up a **Select** brochure from your sales consultant today to find an extensive list of items available. Such as:

- Quartz kitchen worktops
- Premium appliance packages
- Flooring
- Built-in Symphony wardrobes
- Upgraded tiling in main bathroom and en suite

The availability of items is subject to the stage of build and can vary by development and housetype. Our sales consultants will be pleased to provide you with a full brochure and guidance.

A home designed with you in mind

We are constantly reviewing our houses and ensuring they are everything that our customers want in a home. That's why we are proud to have developed and launched our new range of homes.

These homes have been created to embrace modern design and styling, whilst retaining the classic architectural traditions on which Bovis Homes has built its heritage and brand since 1885.

An integral part of the design process for our new range of homes was to ensure they have a real wow factor and eye-catching kerb appeal. From designing external elevations to create attractive street scenes through to maximising the flow and size of the rooms, the homes include a variety of features to capture the attention.

The size, positioning and number of windows in our new collection have created bright and airy homes, this mixed in with the higher ceilings gives your property a spacious feel.

The flow and layout of the new homes has been a key consideration to accommodate today's lifestyles, with a focus on future living. With the kitchen at the heart of the home, impressive family spaces have been included to create spacious, sociable living areas, while attention to master bedrooms and en suites has given the homes added desirability.

Scan me for directions



Broadnook Garden Village Rothley, Leicestershire LE7 4PN



Every care has been taken in the preparation of this brochure. Bovis Homes operates a programme of continuous product development. Features, internal and external, may vary from time to time and may differ from those shown in this brochure. The development layout, landscaping and tenure of all dwellings may be subject to change throughout the course of the development.

Computer generated images, maps, photography, and imagery are intended for illustrative purposes. Features, designs, materials, and visual depictions must be treated as general guidance only. Please speak to a sales consultant for details of specific homes.

Vistry South Central Midlands region

Bromwich Court, Highway Point, Gorsey Lane, Coleshill, Warwickshire B46 1JU. Telephone: 01675 437 000

Produced by the Vistry Group Design Studio.

CROTH DS10755 / 09.24

